

3PHASE AUTO START PREVENTER MODEL - MCS_3PASPU



CUSTOMER CARE
+91 91596 34445



The **3PHASE AUTO START PREVENTER** is an analog device designed to protect 3-phase motor from low voltage, phase failure, and phase reversal. It offers accurate monitoring and control of your motor performance, ensuring efficient operation and preventing damage. It is suitable for submersible pumps, and HVAC systems that utilize 3-phase motors.

SPECIFICATION:

MODEL	: MCS_3PASPU
TYPE	: ANALOG
BOX	: METAL BOX
COLOUR	: WHITE
INPUT SUPPLY	: 3-PHASE
OPERATING VOLTAGE	: 440 VAC
PACKAGE CONTAINS	: 1x 3PHASE AUTO START PREVENTER, 1x USER MANUAL.

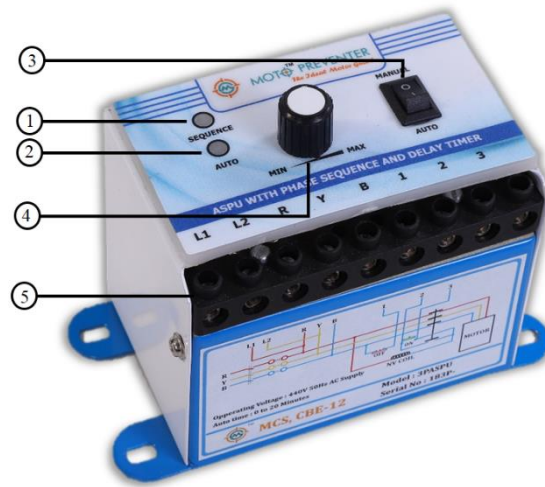
FEATURES:

- LED INDICATION.
- SINGLE PHASE PREVENTER.
- INBUILD LOW VOLTAGE PROTECTION.
- PHASE FAILURE & PHASE REVERSAL PROTECTION.
- DIFFERENT VOLTAGE PROTECTION.
- AUTO START TIMER OPTION.

ADVANTAGES:

- SUITABLE FOR ALL BUTTON STARTER.
- ACCURACY WITH TRIPPING
- AUTO / MANUAL MODE OPERATION
- EASY INSTALLATION AND MAINTENANCE

DESCRIPTION:



1. SEQUENCE LED.
2. AUTO START LED.
3. AUTO/MANUAL SWITCH.
4. AUTO START TIMER POT.
5. INPUT/OUTPUT CONNECTOR.

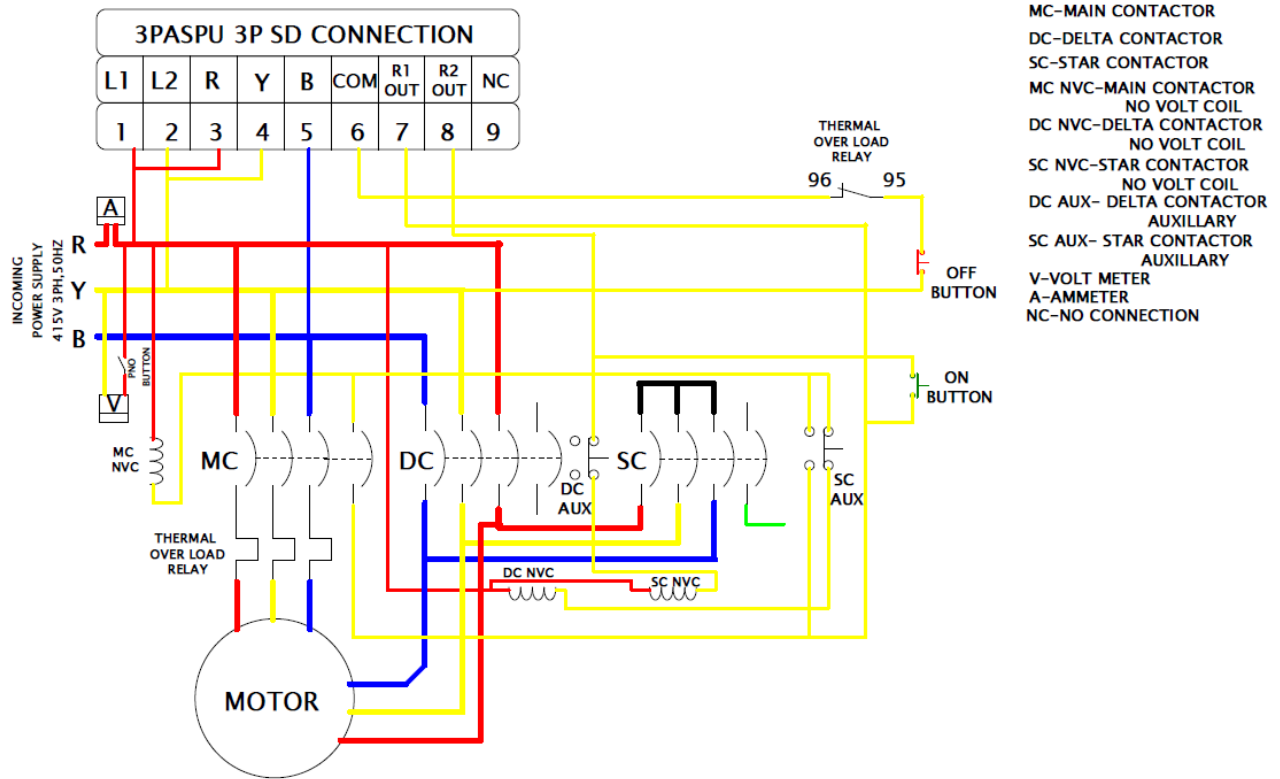
MANUAL FUNCTION:

Set auto/ manual switch into manual position and then turn on power supply. Now controller is ready to monitor the power supply condition and sequence led will turn on, now use green pushbutton to turn on the motor and red push button to turn off the motor.

AUTO FUNCTION:

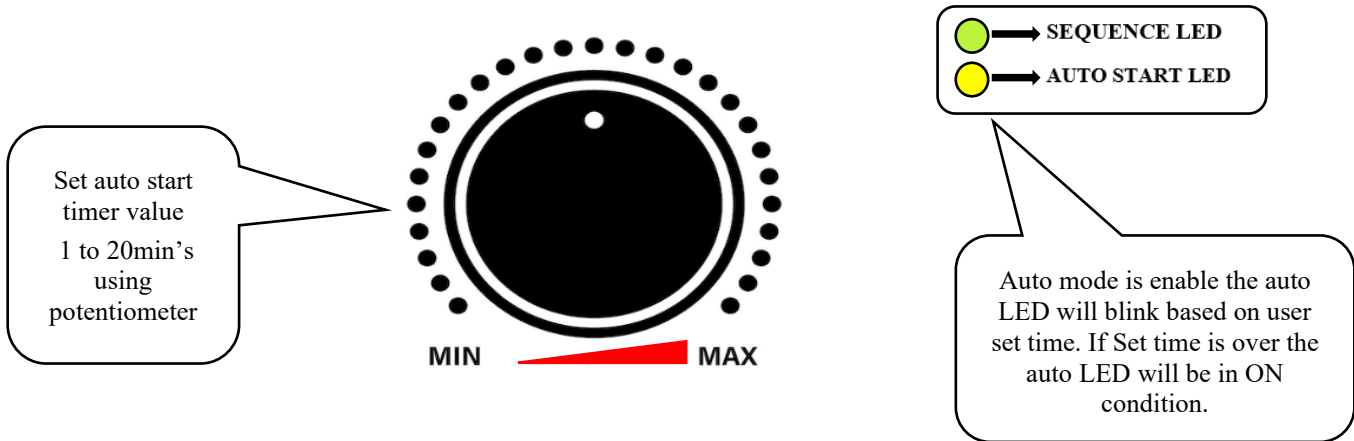
Set auto/ manual switch into auto position and then turn on power supply. Now controller is ready to monitor the power supply condition and sequence led will turn on. Auto start timer will be enabled only in auto mode. It is used to turn on the motor automatically when the power is on, based on user set time and simultaneously the auto led will blink. Once the auto-start timer is over, the auto-led will be in ON condition.

Fig 2: 3PHASE STAR DELTA STARTER CONNECTION DIAGRAM.



NOTE: ALWAYS DISCONNECT POWER BEFORE INSTALLATION OR MAINTENANCE.

SETTINGS:



NOTE: SET AUTO START TIMER VALUE, BEFORE TURNING ON POWER SUPPLY.

Thank you for choosing the **3PHASE AUTO START PREVENTER**. This user manual provides comprehensive information to help you operate and maintain your device effectively. If you have any further questions or require technical support, please contact our customer service team.



WARRANTY:

CUSTOMER NAME:

MOBILE NUMBER:

ADDRESS:

.....

SERIAL NO: BATCH NO:

E-MAIL:

PURCHASE DATE:

DEALER DETAILS:

***NOTE:**

WARRANTY NOT APPLICABLE FOR PHYSICAL DAMAGE, WATER DAMAGE, NATURAL DISASTER, HIGH VOLTAGE FROM MAINS AND THIRD PARTY REPAIRS.

----- NOTES -----

MANUFACTURED BY:

MOTO CONTROL SYSTEM

186-190,2nd Floor, Dr. Radha Krishnan Street, Tatabad, Coimbatore, Tamil Nadu 641012.

E-mail: info@motocontrolsystem.com Phone: 0422 4334445

Web: www.motocontrolsystem.com